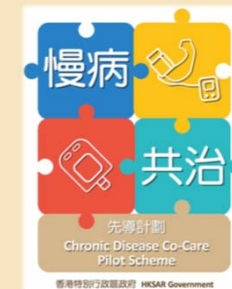
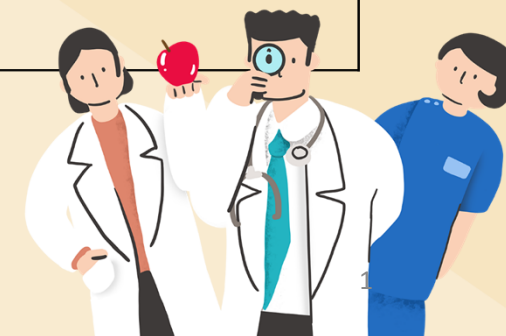


Latest Outlook of Chronic Disease Co-care Pilot Scheme



Time	Topic	Speaker
1:00-2:00pm	Strengthening Primary Healthcare: Development of the CDCC	Dr PANG Fei Chau, Commissioner for Primary Healthcare
	Overview of CDCC's Upcoming Enhancements	Dr Christina MAW, Asst Director of Strategic Purchasing Office
	Highlight of CDCC Enhancements <ul style="list-style-type: none"> • Expansion to Cover Blood Lipid Testing • Integration of GOPC PPP 	Dr Tony HA, Asst Commissioner for Primary Healthcare Dr Christina MAW, Asst Director of Strategic Purchasing Office
2:00-2:30pm	Question and Answers	



Strengthening Primary Healthcare: Development of the CDCC Pilot Scheme

Webinar on Latest Outlook Of Chronic Disease Co-care Pilot Scheme

4 March, 2025

Dr PANG Fei Chau, Commissioner for Primary Healthcare



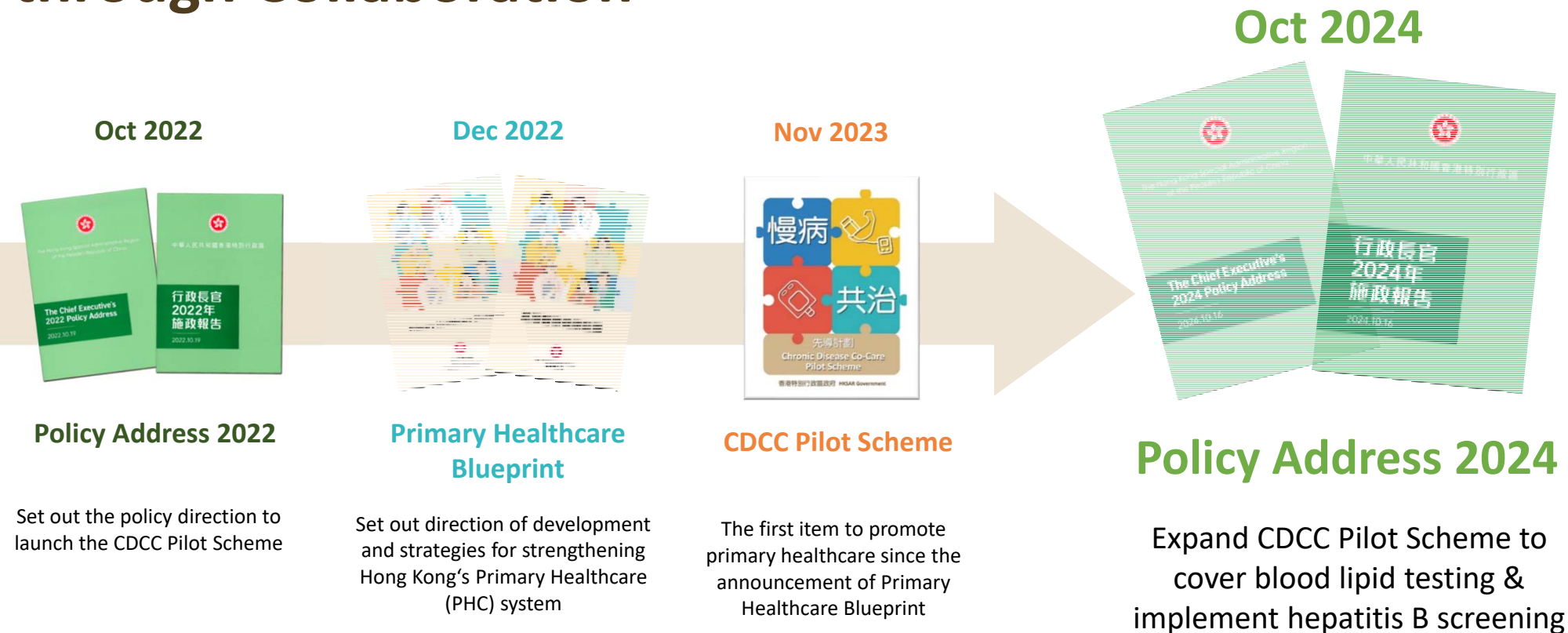
Background

- The Government released the Primary Healthcare Blueprint on 19 December 2022
- In November 2023, the Chronic Disease Co-Care Pilot Scheme (CDCC Pilot Scheme) was launched as the first major initiative under the Primary Healthcare Blueprint

Purposes

- To thank Family Doctors in the collaborative effort with the Government in CDCC development
- To encourage prospective Family Doctors in Primary Care Directory to join in early on the effort to develop primary healthcare

Key Milestones of PHC and CDCC Development through Collaboration



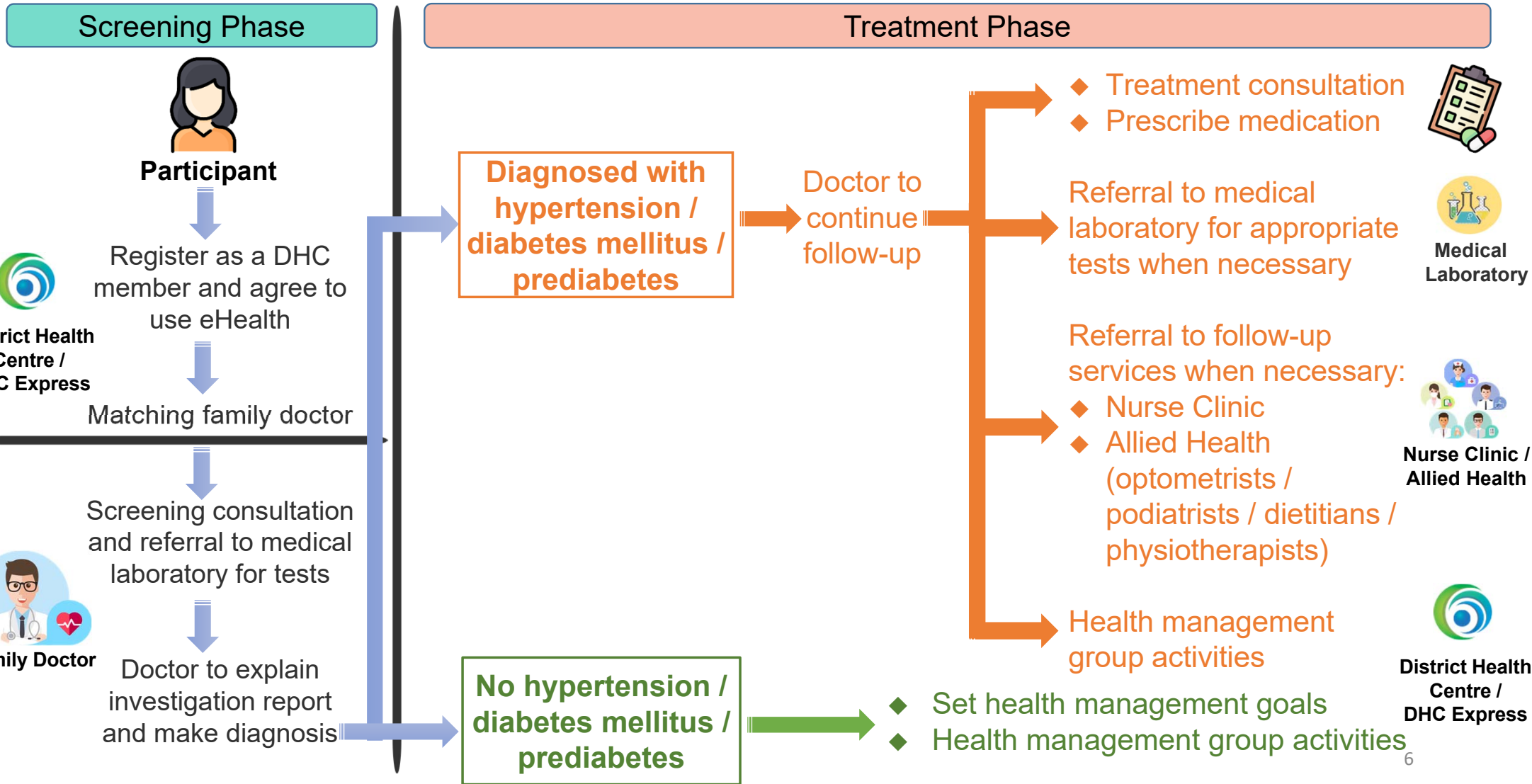
Overview of CDCC Pilot Scheme

- Officially launched on **13 Nov 2023**
- Providing **subsidies** for the public to conduct screening for and manage targeted chronic diseases, including **diabetes mellitus (DM) and hypertension (HT)**, in the private healthcare sector via a “**Family Doctor for All**” and multidisciplinary **public-private partnership model coordinated by District Health Centre (DHC)/ DHC Express (DHCE)**
- The Scheme has received **positive feedback from the public and Family Doctors (FDs)**

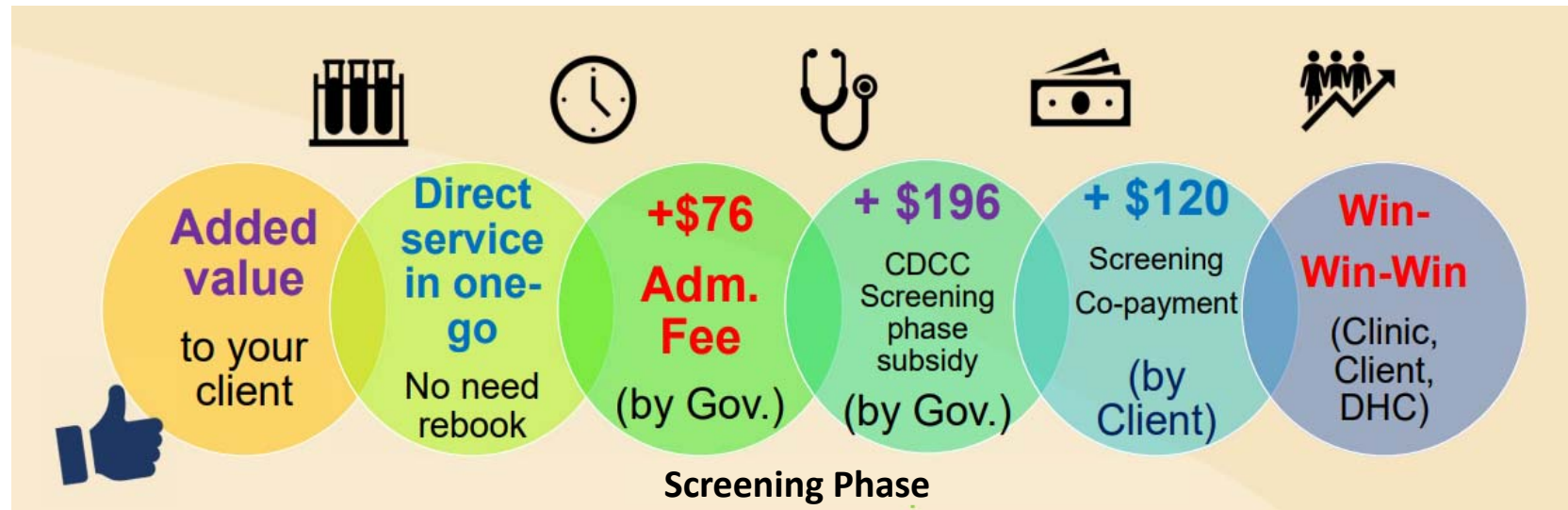


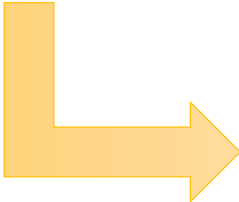
Key elements of CDCC Pilot Scheme

Current Service Flow for CDCC (protocol-driven pathway)



Direct CDCC Enrolment in FD Clinic




Treatment Phase

- Gov will provide a subsidy of **\$166** for each subsidised consultation
- Participant will pay the co-payment fee determined by FD (Gov. recommended co-payment fee is **\$150**)



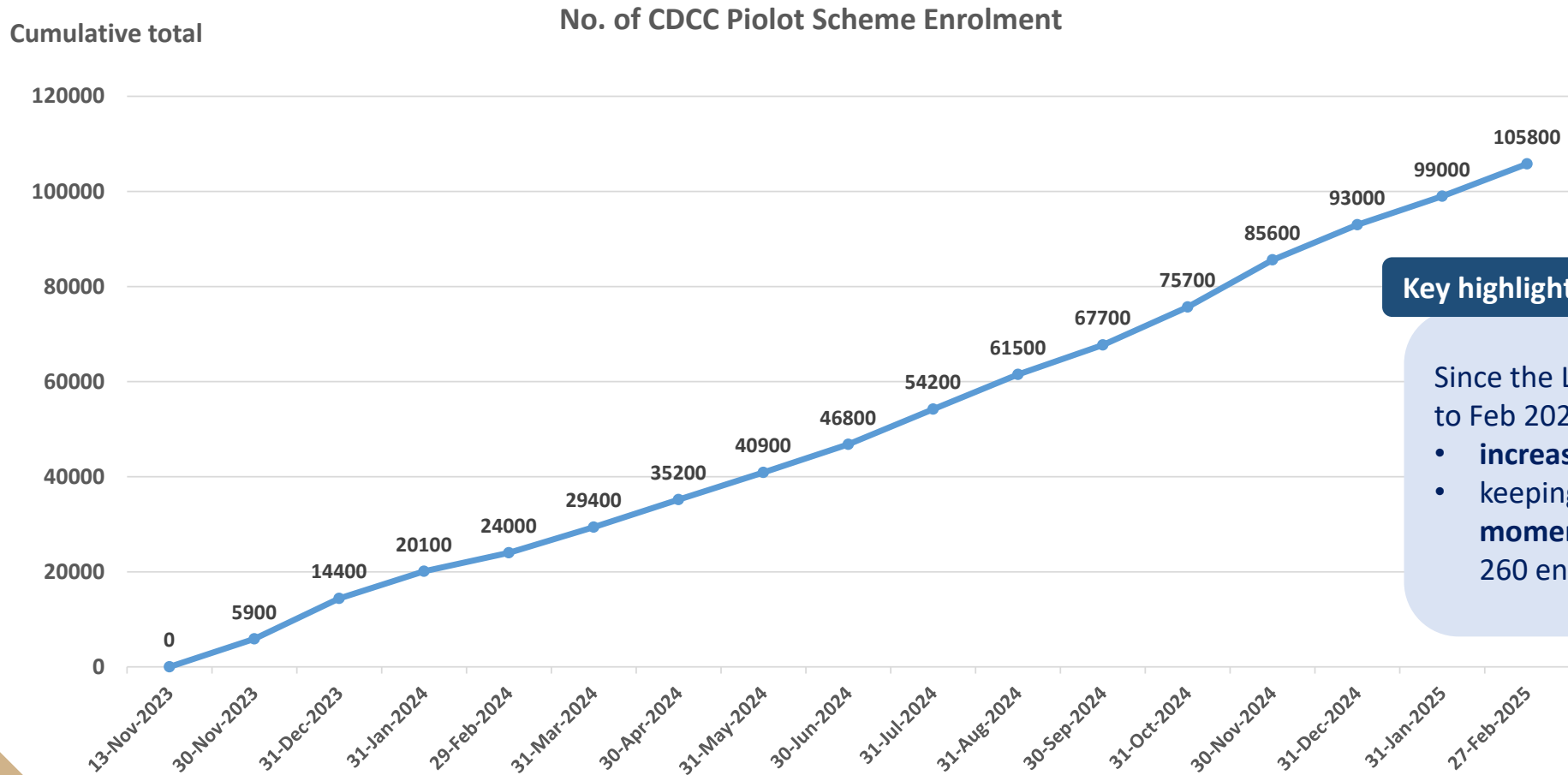
Other Enhanced Support in CDCC

- Strengthened **care coordination and support to FDs by DHC/Es**
- Increased capacity and support by purchasing **Nurse Clinic & AH services**
- Enhanced IT system in:
 - **Administrative support**
 - **Streamlined participant identification process**
 - **Improved workflow efficiency & usability**



Overview of CDCC Pilot Scheme

Continuous Increase in CDCC Participant Pool



Key highlights

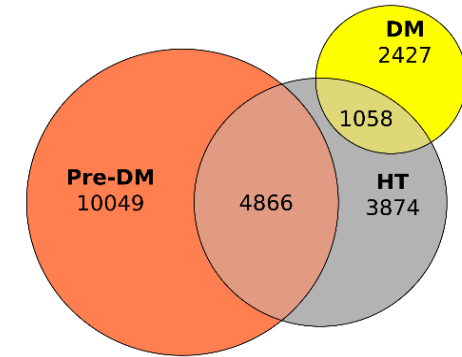
Since the Launch in Nov 2023 to Feb 2025

- **increasing** enrolment
- keeping **upward momentum** with average 260 enrolees per week

Participant Health Benefit: Early Detection and Management

Completed screening	60 549
Entered treatment phase	23 184

40%



Scheme participants entering treatment phase

Notes:

1. Provisional figures as at 31 Jan 2025

Key highlights

- Of participants who have completed screening, **~40% were eligible to enter treatment phase** (Pre-DM2, DM, HT, DM+HT)
- Of participants who have entered treatment phase, **~50% were admitted to pre-DM 2 management plan**

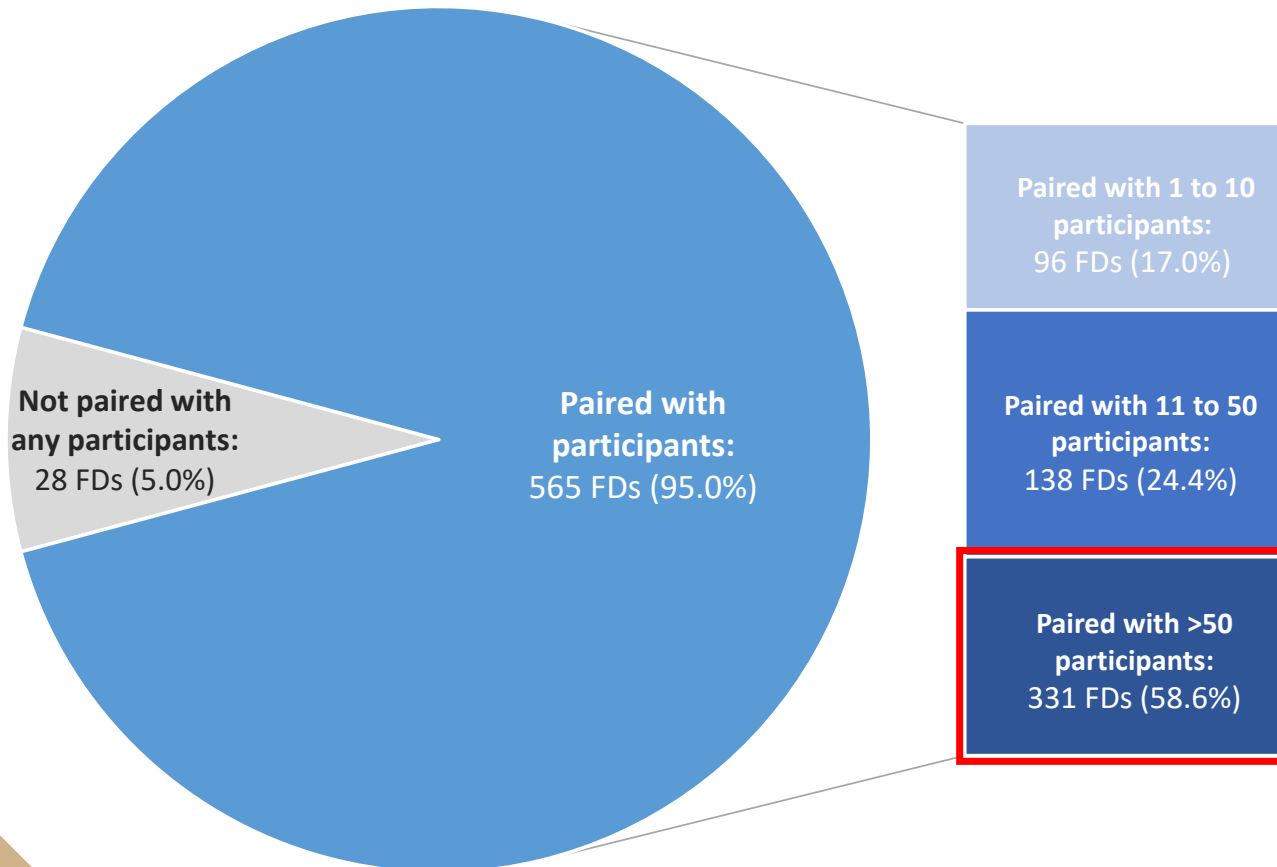
Continuous Support on CDCC from Family Doctors in Building Extensive Network of Service Locations

Family Doctor (FD) Enrolment Situation –

Figures of FD enrolment	As at 27 Feb 2025
No. of doctors enrolled as FD (vetted by Programme Office)	602
No. of service locations provided by FDs (excluding service locations of FDs suspended without accepting new case*)	691

*An FD may provide service in more than 1 service location

Participant Pairing with Family Doctor



95 % of FDs paired with participants, with **almost 60% pairing with >50 participants**

For FD paired with >50 participants:

No. of participants paired with each FD (Nov 2023 – Dec 2024)	No. of FD
>2000	1
1000- 2000	7
500- 999	28
100- 499	214
51-99	81

Notes:

1. Source: CDCC IT System
2. Provisional figures (as at 31 Dec 2024)
3. Excluded FDs withdrawn

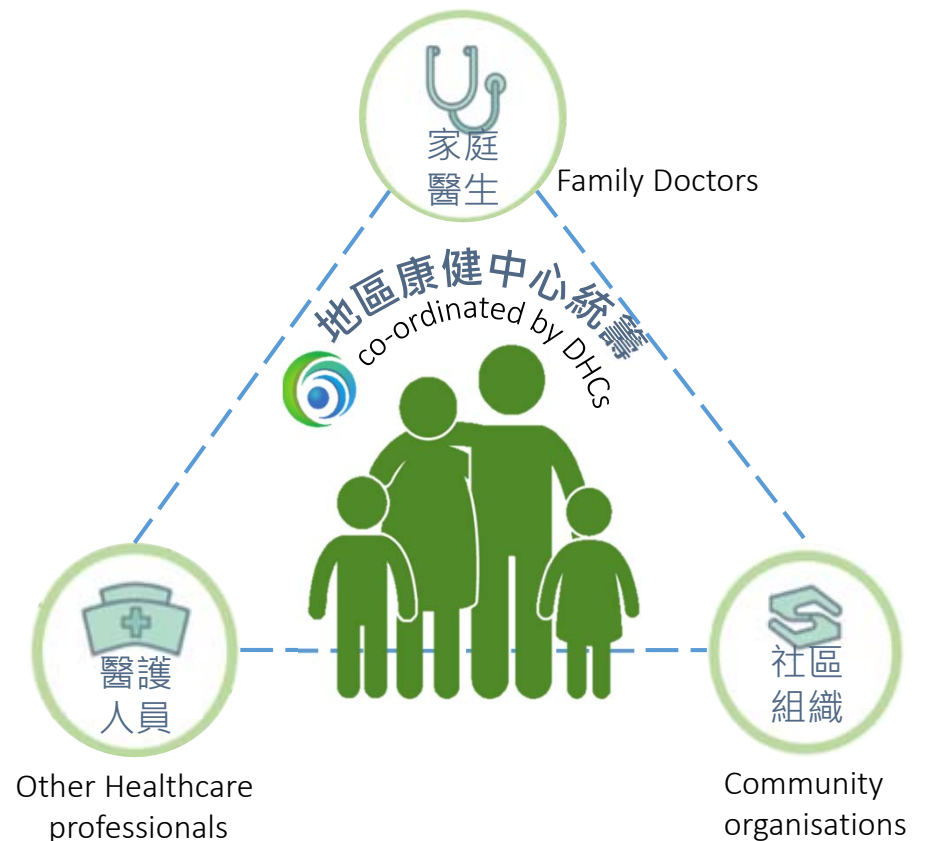


Way Forward: Rolling out of 2024 PA Initiatives on CDCC

- 1) Expand the service scope of the Chronic Disease Co-Care Pilot Scheme (CDCC Pilot Scheme) to cover blood lipid tests**
- 2) Roll out subsidised risk-based hepatitis B screening** to prevent liver cancer, under which DHCs and family doctors provide risk-based hepatitis B screening and management through strategic purchasing.

Community-based Primary Healthcare System – Family Doctor for All

- Provision of preventive care and continuity of care
- Build long term trustworthy relationship between citizens and district-based Primary Healthcare Network



Call for Action – Join CDCC Now

Benefits as a Family Doctor -

- ✓ Be part of the transformative movement for advancing primary healthcare
- ✓ Pairing with CDCC participants to bring positive health impacts and financial sustainability
- ✓ Extensive support ingrained in CDCC programme design, e.g. DHC/E network, IT systems and financial incentives, to be continuously developed by Government

**Simple steps to
Enrol as Family
Doctor!**

Simple steps to enrol as Family Doctor

Website for enrolment-

https://www.primaryhealthcare.gov.hk/cdcc/en/hp/join_cdcc_how_to_enrol.html

The screenshot shows the Health Bureau website for the Hong Kong Special Administrative Region. The header includes the Health Bureau logo and name, a search icon, and a language selector (繁 簡). A navigation bar contains buttons for 'Primary Healthcare in Hong Kong', 'Introduction of CDCC Pilot Scheme', 'Eligibility of Scheme Participant', 'Join CDCC' (highlighted in red), 'Resources', 'News', and 'FAQ'. Below the navigation bar is a 'Quick Links' section with links for 'Enrol as a Family Doctor', 'Co-payment Information', 'Investigation list', 'Drug list', and 'Contact Us'. The main content area has a breadcrumb trail: 'Home / Healthcare Professionals / Join CDCC / How to enrol in CDCC'. A large red banner at the top of the main content area reads 'How to enrol in CDCC' with a 'Quick Guide to Enrol' button. On the left side, there is a vertical menu with buttons for 'Eligibility of Family Doctors', 'Scope of Service Provision', 'Subsidy Level & Co-Payment', 'Doctor-patient Partnership Incentive Mechanism', and 'How to enrol in CDCC'. The main content area features a section titled 'CDCC 3 Simple Steps to Enrol Online For Family Doctors' with an icon of a hand holding a smartphone. Below this, there are two steps: 'Step 1: Submit e-Enrolment Form via eHRSS' and 'Step 2: Provide the required information via eHRSS platform'. Step 1 includes instructions to login to the eHRSS platform, click 'Administration', and select 'CDCC Pilot Scheme - Doctor Enrolment'. Step 2 includes instructions to agree to terms and conditions, input required information, and indicate the co-payment fee.

Health Bureau
The Government of the Hong Kong Special Administrative Region
of the People's Republic of China

Primary Healthcare in Hong Kong | Introduction of CDCC Pilot Scheme | Eligibility of Scheme Participant | **Join CDCC** | Resources | News | FAQ

Quick Links: [Enrol as a Family Doctor](#) | [Co-payment Information](#) | [Investigation list](#) | [Drug list](#) | [Contact Us](#)

Home / Healthcare Professionals / Join CDCC / How to enrol in CDCC

How to enrol in CDCC

Quick Guide to Enrol

CDCC 3 Simple Steps to Enrol Online For Family Doctors

Step 1: Submit e-Enrolment Form via eHRSS

- Login to [eHRSS platform](#);
- Click "Administration";
- Select "CDCC Pilot Scheme - Doctor Enrolment"

Step 2: Provide the required information via eHRSS platform

- Agree to the Terms & Conditions of Agreement for Private Doctors, Undertakings and Declaration, and Personal Information Collection Statement;
- Input required information such as personal particulars, information of clinic and bank information;
- Indicate the Co-payment fee to be collected from patient per consultation in the Treatment Phase



Overview of CDCC's Upcoming Enhancements

Webinar on Latest Outlook Of Chronic Disease Co-care Pilot Scheme

4 March 2025

Dr Christina MAW, Assistant Director, Strategic Purchasing Office



中華人民共和國香港特別行政區政府
醫務衛生局
Health Bureau
The Government of the Hong Kong Special Administrative Region
of the People's Republic of China

Upcoming Enhancements

- **Outlook – Transform from a chronic disease management programme-based to a chronic disease management platform**
 - Inclusion of **blood lipid testing** and **hepatitis screening** for more comprehensive risk-based screening
 - **Vaccination** for preventive care
 - **Integration of GOPC PPP** to align delivery models
- **Ongoing supporting services enhancements**
 - **Community Drug Formulary and drug list expansion**
 - **New lab collaboration model**
 - **Post-pilot enhancements (including system enhancements)**

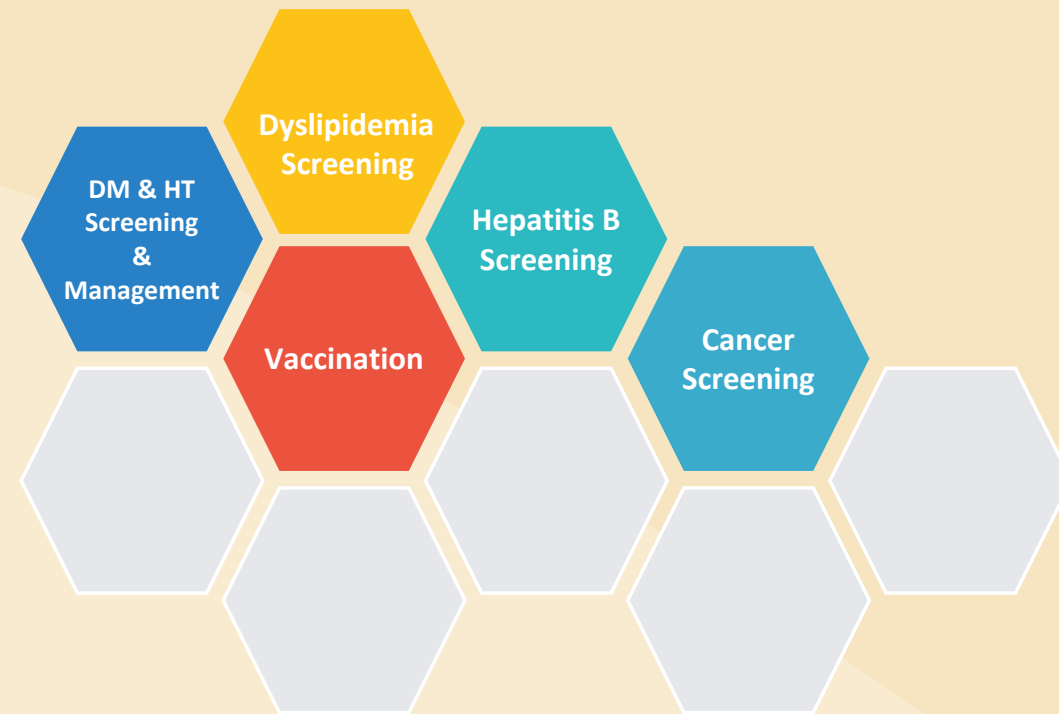


CDCC Platform – A Platform for Multiple Initiatives

- Transform from programme based to platform based
- Launch started with DM&HT, will transform to a platform which covers with different diseases and health situations

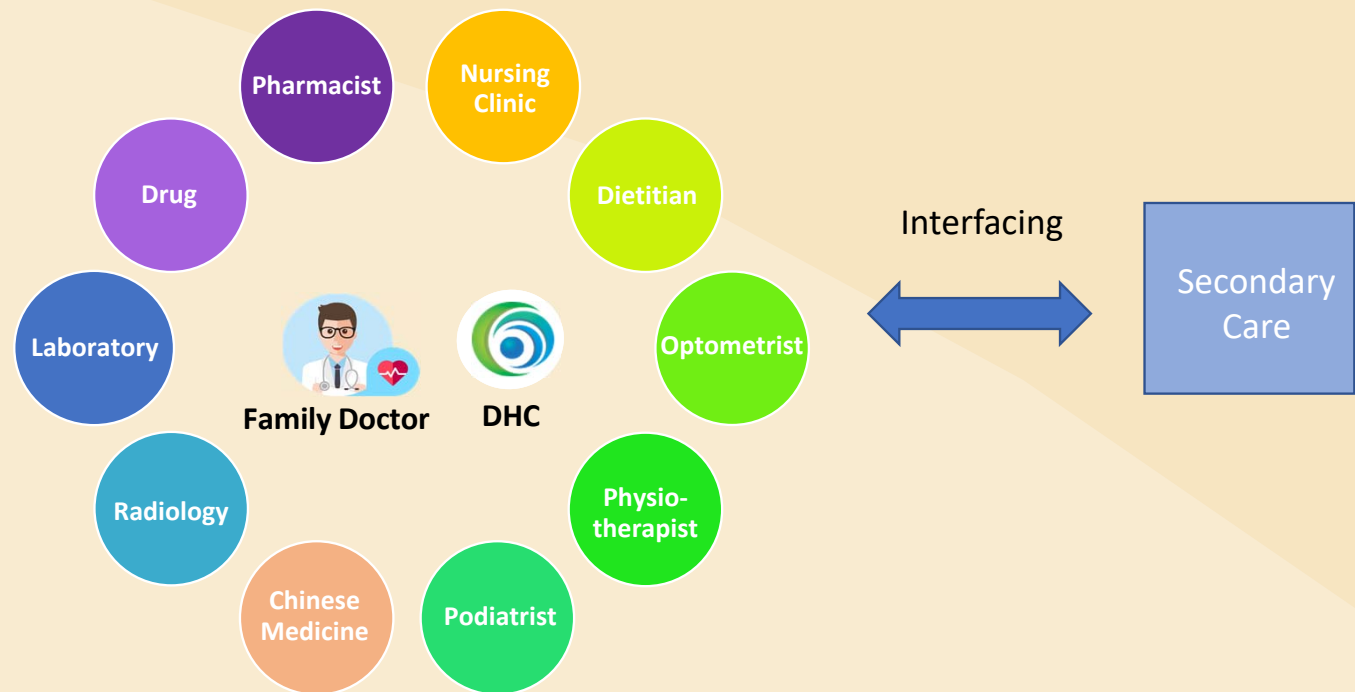
Scope

- Screening
- Preventive care
- Management of chronic diseases
- Align with participants' life cycle management



CDCC Platform – Family Doctors and Multi-disciplinary Network Support

- **Family Doctors provide holistic whole-person care to participants with**
 - Supported by a network of multi-disciplinary support
 - Disease management according to clinical condition / clinical protocol
- DHC as health coordinator



Vaccination Subsidy Scheme (VSS) - Seasonal Influenza Vaccines (SIV)

- Government purchasing additional Seasonal influenza vaccines for specified VSS doctor groups in **2025/26 season**
- 1. To test out the private market's readiness to obtain seasonal influenza vaccines through Government contract and to stabilize the vaccines supply for VSS eligible persons at Government specified price
 - 2025/26 SIV as a transitional arrangement, pave the way for long-term arrangement
 - Pilot with purchasing certain additional quantity
 - Test and build readiness of vaccine suppliers, VSS doctors and IT system
- 2. In long run, to explore extending the SIV supply coverage to total population to ensure stable vaccine supply

Arrangement for Seasonal Influenza Vaccines Drawn from Government Contracts

- 1. Government position on specified VSS doctors to draw seasonal influenza vaccines from Government contracts**
 - Set up contracts with suppliers and allow specified VSS doctors to draw seasonal influenza vaccines at specified quantity for eligible persons under VSS at a price set by the Government
 - Specified VSS doctors directly settle payment with vaccine suppliers

- 2. Proposed specified VSS doctors** - Doctors who joined both VSS and CDCC Pilot Scheme in the period specified by the Government

- 3. Co-payment setting for eligible persons in 2025/26:**
 - A. Propose combined co-payment setting for eligible adult group and eligible children group**

[Note: 2024/25 co-payment setting are under *each* eligible group, e.g. \geq 65 years; 50-64 years; pregnant women, persons with intellectual disability]

 - i. Eligible adult group
 - ii. Eligible children group

 - B. Additionally, VSS doctors can set co-payment specifically for paired participants**
 - Encourage eligible persons receive vaccination at paired family doctors

 - C. Specified VSS doctors who draw from Government contract are required to set the co-payment at \$0 across all eligible persons**
 - Eligible persons thus can benefit directly from Government bulk purchase of lower cost vaccines

Community Drug Formulary and Drug List Expansion

- The “Specified Drug” list under the CDCC Pilot Scheme which would form the foundation of the future community drug formulary
- Continue expansion, next expansion effective in 3Q 2025
(Launched on 13 Nov 2023 with 43 drug items → 1 Aug 2024 with 59 drug items)

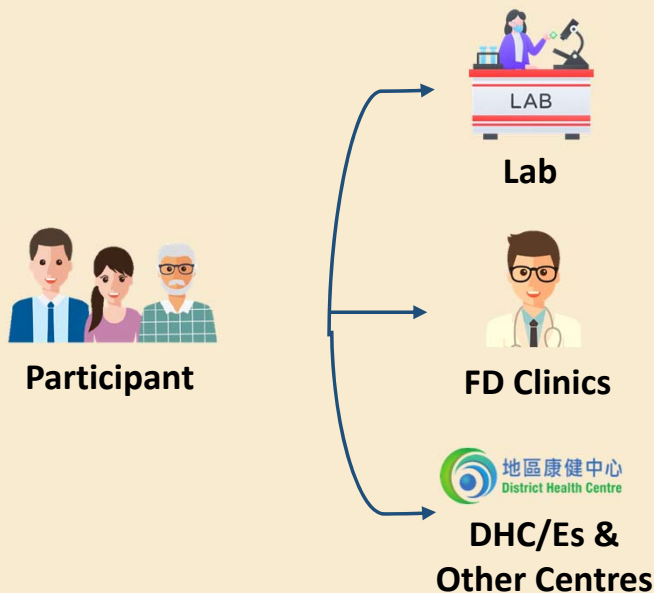


Future Community Drug Formulary

- To support Scheme participants enrolled in the Government subsidised strategic purchasing programmes on drug access at affordable prices
- Family doctors participating in the programmes and future community pharmacies can purchase drugs in the formulary from designated suppliers at discounted prices
- To extend scope of the Community Drug Formulary and explore mechanisms of different subsidies & co-payments in different drug tiers

New Laboratory Collaboration

- New Laboratory Service Collaboration will start in **November 2025**
- New features:
 1. Expansion of **service scope, test items & packages**
 2. Participants can choose to have blood taking/ specimen collection **at FD clinics (if available), DHC/Es & other centres, awarded laboratories**
 3. **Automatic structural data uploading** by laboratories
 4. Divide the territory into **5 Service Regions**, availability of service sites in each region



Doctors' Choice :

- FD **choose to partner with** one of the awarded laboratories
- FD can choose to (Optional)
 - **provide blood taking and specimen collection service at the clinic** – courier to lab
 - FD: collect an **optional, mutually agreed** (with patients) **add-on service fee + designated lab test co-payment** from participant on behalf of the laboratory

IT Initiative to Streamline the Workflow : Post- Pilot

- Integration with **Service providers' Business Platform**
 - To avoid duplicated data entry
- Enhancement in **Central Administrative & Clinic Administrative** functions
 - To facilitate operations

Central Administrative Functions

Allow Back-office Administrator to carry out central administrative functions

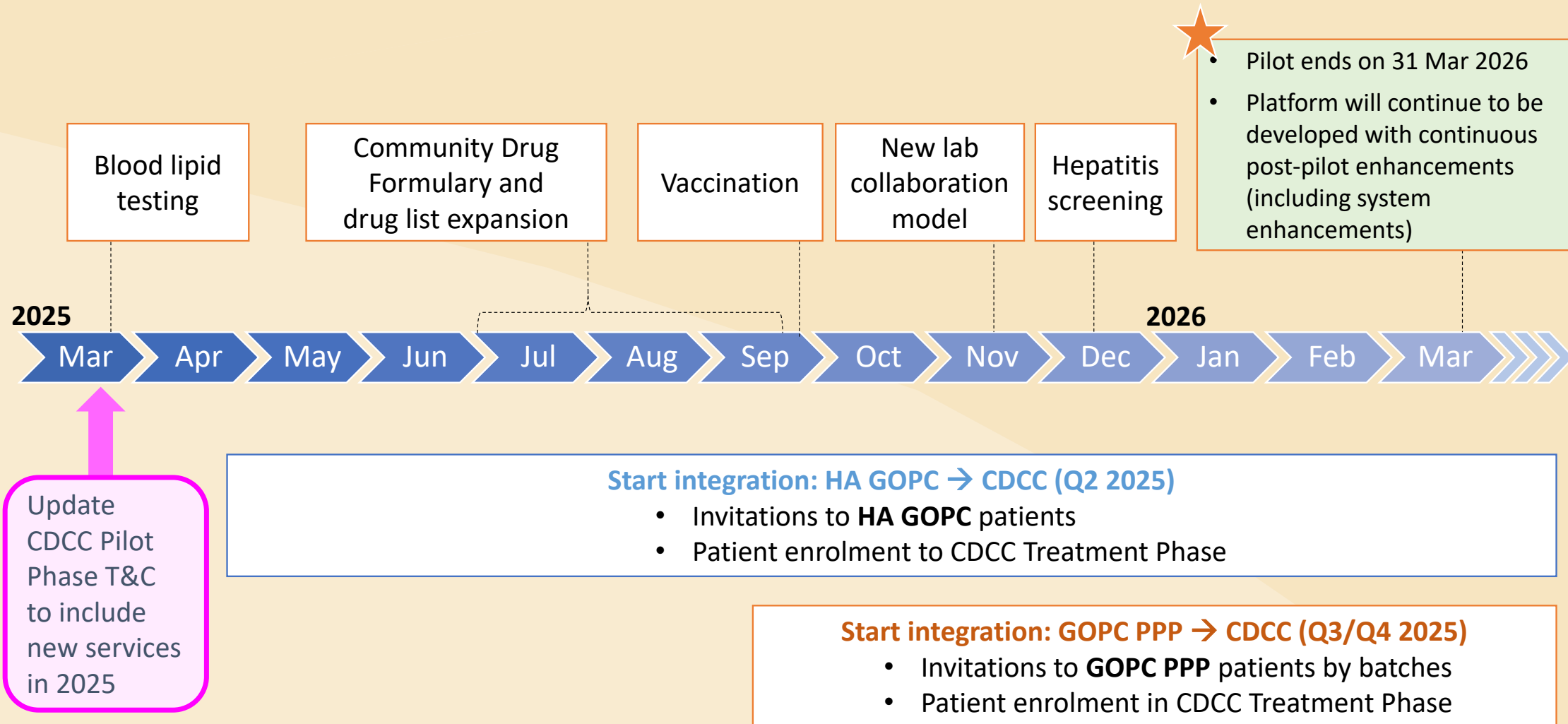
- Enrolment for FDs and participants
- Follow-up investigation report
- Submit reimbursement
- Drug ordering
- Manage user accounts
- Receive subsidies via corporate account

Clinic Administrative Functions

Allow Clinic Administrator to carry out non-clinical and supporting work

- Enrolment for Participants
- Attendance taking, follow up on investigation reports and others
- View notifications for service providers
- Supporting clinical work, streamline payment checkout

2025 and Beyond





Highlight of CDCC Pilot Scheme Enhancements - Expansion to Cover Blood Lipid Testing

Webinar on Latest Outlook Of Chronic Disease Co-care Pilot Scheme

4 March, 2025

Dr Tony HA, Assistant Commissioner for Primary Healthcare



Background

- In November 2023, the Chronic Disease Co-Care Pilot Scheme (CDCC Pilot Scheme) was launched as the first major initiative under the Primary Healthcare Blueprint
- As announced in 2024 Policy Address, Expand the service scope of the Chronic Disease Co-Care Pilot Scheme (CDCC Pilot Scheme) to cover blood lipid tests

Purpose

- To highlight of CDCC Pilot Scheme Enhancement:

Expansion to Cover Blood Lipid Testing

Policy direction on service expansion of CDCC Pilot Scheme - Key Initiatives Announced in Policy Address 2024

Advance Primary Healthcare Development

186. The Government will promote the **development of primary healthcare on all fronts**, including

(vii) Expanding the Chronic Disease Co-Care Pilot Scheme to **cover blood lipid testing**; ...





Highlight of Expansion to Cover Blood Lipid Testing

- To provide a **comprehensive approach to the assessment and proper management of cardiovascular disease (CVD) risk factors** including the “three highs” (high blood pressure, high blood sugar, high cholesterol)



Streamlined clinical workflow



Expanded management packages



Enhanced IT System



Streamlined Clinical Workflow

- **Inclusion of lipid profile in screening phase** for all eligible participants
- **Further inclusion of participants in treatment phase**, fulfilling following criteria
 - Dyslipidaemia without prediabetes (HbA1c 6.0-6.4% or FPG 6.1-6.9 mmol/L) or DM or HT
 - LDL-C ≥ 5.0 mmol/L; or
 - LDL-C 2.6 – < 5.0 mmol/L with CVD risk $\geq 20\%$
- **Reference Framework** provided as reference guidelines

Out of Mid-2021 population of HK aged 45+ (N = 3 854 500),
estimated as eligible for current CDCC screening (N = 2 202 100)

For every **100** persons eligible for enrolling in the CDCC Pilot Scheme for DM/HT screening,

- **32.2** of them are eligible for the DM/HT/Pre-DM 2 treatment phase, consisting of:
 - **9.3 persons** meeting the initial target for statin therapy
- Additional **4.4 persons** without DM/HT/Pre-DM 2 also meet the initial target for statin therapy

(Source: Derived from Population Health Survey 2020-22)

Expanded Management Packages

Current Management Packages

Screening Result Intervention	<u>Package A:</u> HbA1c ≤5.9% or FPG ≤6.0 mmol/L without HT	<u>Package B:</u> Prediabetes (HbA1c 6.0 – 6.4% or FPG 6.1 – 6.9mmol/L) without HT	<u>Package C:</u> DM/HT
Medical Consultation	NA	Maximum 4 subsidised visits every year On drug treatment for pre-DM: 4 Not on drug treatment for pre-DM: 2	Maximum 6 subsidised visits every year
Health Coaching/ Nurse Clinic	Health coaching (annually)	2 subsidised Nurse Clinic visits (annually)	2 subsidised Nurse Clinic visits (annually)
Other AH Services	NA	Maximum 3 subsidised visits every year (Dietitian/ Physiotherapist)	Maximum 3 subsidised visits every year (Dietitian/ Physiotherapist/ Podiatrist)

New Package

Specified condition of dyslipidaemia without pre-DM (HbA1c 6.0 – 6.4% or FPG 6.1 – 6.9mmol/L) or DM or HT

- Take reference from Package B
- **Medical Consultation**
 - **First year: maximum 4 subsidised visits is recommended**
 - **Subsequent years: maximum 2 subsidised visits is recommended**

Enhanced IT System - CVD Risk Assessment

Chronic Disease Co-Care Pilot Scheme > DM & HT Screening

Investigation Letter

Service Summary	
Service	DM & HT Screening
Reference No.	2383000223000004285

Treatment Activity	Investigation / Letter
TG	14.00 mmol/L
HDL	11.00 mmol/L
LDL	11.00 mmol/L
Cr	400.00 umol/L
eGFR	0.04 ml/min/1.73m ²
ALT	90.00 U/L
ALP	20.00 U/L
Urine ACR	23.00 mg/mmol
Urine PCR	23.00 mg/mmol
Other Urine Test(s)	24 hours urine
X-ray	Done
ECG	Done
Other Test(s)	Testing

Consultation Print

Consultation Date: 11-Aug-2023

Clinical Note

*Consultation Date: 11-Aug-2023

*Consultation Type: Face-to-Face Consultation Phone Consultation (Non-subsidised)

Assessment	Preventive Care	Investigation Result	Screening Result
Diagnosis	HT Screening:	<input checked="" type="radio"/> Normal BP	<input type="radio"/> High Normal BP <input type="radio"/> HT
	DM Screening:	<input type="radio"/> Normal	<input checked="" type="radio"/> Prediabetes <input type="radio"/> DM
	Dyslipidaemia Screening:	<input checked="" type="radio"/> Normal	<input type="radio"/> Dyslipidaemia <input type="radio"/> N/A
			<input type="radio"/> Specified Condition of Dyslipidaemia ^[1]
			<input type="radio"/> Non Specified Condition of Dyslipidaemia ^[1]

Estimated cardiovascular disease risk based on JBS 2 guidelines ^[2]

	% over 10 years
<10	
10-20	
>20	

^[1] Specified Condition of Dyslipidaemia : Participants with (1) LDL ≥ 5 mmol/L; or (2) LDL 2.6 - < 5.0mmol/L and CVD risk ≥20%

^[2] British Cardiac Society; British Hypertension Society; Diabetes UK; HEART UK; Primary Care Cardiovascular Society; Stroke Association. JBS 2: Joint British Societies' guidelines on prevention of cardiovascular disease in clinical practice. Heart. 2005 Dec;91 Suppl 5(Suppl 5):v1-52. doi: 10.1136/hrt.2005.079988.

Note: suspected DM due to poor diet control

Delete Save Cancel

British Cardiac Society; British Hypertension Society; Diabetes UK; HEART UK; Primary Care Cardiovascular Society; Stroke Association. JBS 2: Joint British Societies' guidelines on prevention of cardiovascular disease in clinical practice. Heart. 2005 Dec;91 Suppl 5(Suppl 5):v1-52. doi: 10.1136/hrt.2005.079988.

Inclusion of Lipid Profile to Laboratory Packages in Screening Phase

Current lab packages in screening phase

The screenshot shows a web-based interface for selecting laboratory investigation items. It features a progress bar at the top with three steps: 'Investigation Details' (completed), 'Investigation Items' (current), and 'Confirmation'. Below the progress bar, there is a prompt: 'Please select the investigation items by clicking the following selections or individual investigation items.' The main area is titled '*Investigation Grouping' and contains five selectable packages, each in a rounded rectangular box with a '\$0' price tag at the bottom right. The packages are:

- Package (E) - Annual Tests for Pre-DM**
 - HbA1c
 - Glucose, Fasting / FPG
 - Full Lipid Profile, Fasting
- Package (G) - Confirmatory Tests for Suspected DM [if initial screening test: HbA1c > 6.5% or FPG > 7 mmol/L]**
 - HbA1c
 - Glucose, Fasting / FPG
 - Full Lipid Profile, Fasting
 - RFT with eGFR
- Package (H) - For Newly Diagnosed HT**
 - HbA1c
 - Glucose, Fasting / FPG
 - Full Lipid Profile, Fasting
 - RFT with eGFR
 - MSU, Routine / Microscopy
- DM screening (HbA1c)**
 - HbA1c
- DM screening (FPG)**
 - Glucose, Fasting / FPG

At the bottom of the interface are 'Next' and 'Cancel' buttons.

Dyslipidaemia/DM screening (HbA1c)

- HbA1c
- Full Lipid Profile, Fasting

Dyslipidaemia/DM screening (FPG)

- Glucose, Fasting/FPG
- Full Lipid Profile, Fasting

Inclusion of Lipid Profile to Laboratory Packages in Treatment Phase

Lab packages in treatment phase

<p>Package (F) - Annual Tests for Pre-DM</p> <ul style="list-style-type: none"> HbA1c Glucose, Fasting / FPG Full Lipid Profile, Fasting <p>\$xx</p>	<p>Package (G) - Confirmatory Tests for Suspected DM [If initial screening test: HbA1c > 6.5% or FPG > 7 mmol/L]</p> <ul style="list-style-type: none"> HbA1c Glucose, Fasting / FPG Full Lipid Profile, Fasting RFT with eGFR <p>\$xx</p>	<p>Package (H) - For Newly Diagnosed HT</p> <ul style="list-style-type: none"> HbA1c Glucose, Fasting / FPG Full Lipid Profile, Fasting RFT with eGFR MSU, Routine / Microscopy <p>\$xx</p>
<p>DM screening (HbA1c)</p> <ul style="list-style-type: none"> HbA1c <p>\$xx</p>	<p>DM screening (FPG)</p> <ul style="list-style-type: none"> Glucose, Fasting / FPG <p>\$xx</p>	<p>Package (A) - Basic Care Package (1)</p> <ul style="list-style-type: none"> Glucose, Fasting / FPG Full Lipid Profile, Fasting RFT with eGFR <p>\$xx</p>
<p>Package (B) - Hypertension (HT)</p> <ul style="list-style-type: none"> Glucose, Fasting / FPG Full Lipid Profile, Fasting RFT with eGFR Urine PCR 	<p>Package (C) - Diabetes Mellitus (DM)</p> <ul style="list-style-type: none"> HbA1c Glucose, Fasting / FPG Full Lipid Profile, Fasting RFT with eGFR 	<p>Package (E) - Basic Care Package (2)</p> <ul style="list-style-type: none"> HbA1c Glucose, Fasting / FPG

Dyslipidaemia/DM screening (HbA1c)

- HbA1c
- Full Lipid Profile, Fasting

Dyslipidaemia/DM screening (FPG)

- Glucose, Fasting/FPG
- Full Lipid Profile, Fasting

Prepare for Service Launch and Announcement

- ✓ Expansion will launch on 28 March 2025
- ✓ Public announcement through Press Release ahead of service launch
- ✓ CDCC Website will be updated for release of latest programme information
- ✓ IT Training Session for doctors on 24 Mar 2025

- **Call for Action: Join CDCC Now**

Website for enrolment-

https://www.primaryhealthcare.gov.hk/cdcc/en/hp/join_cdcc_how_to_enrol.html



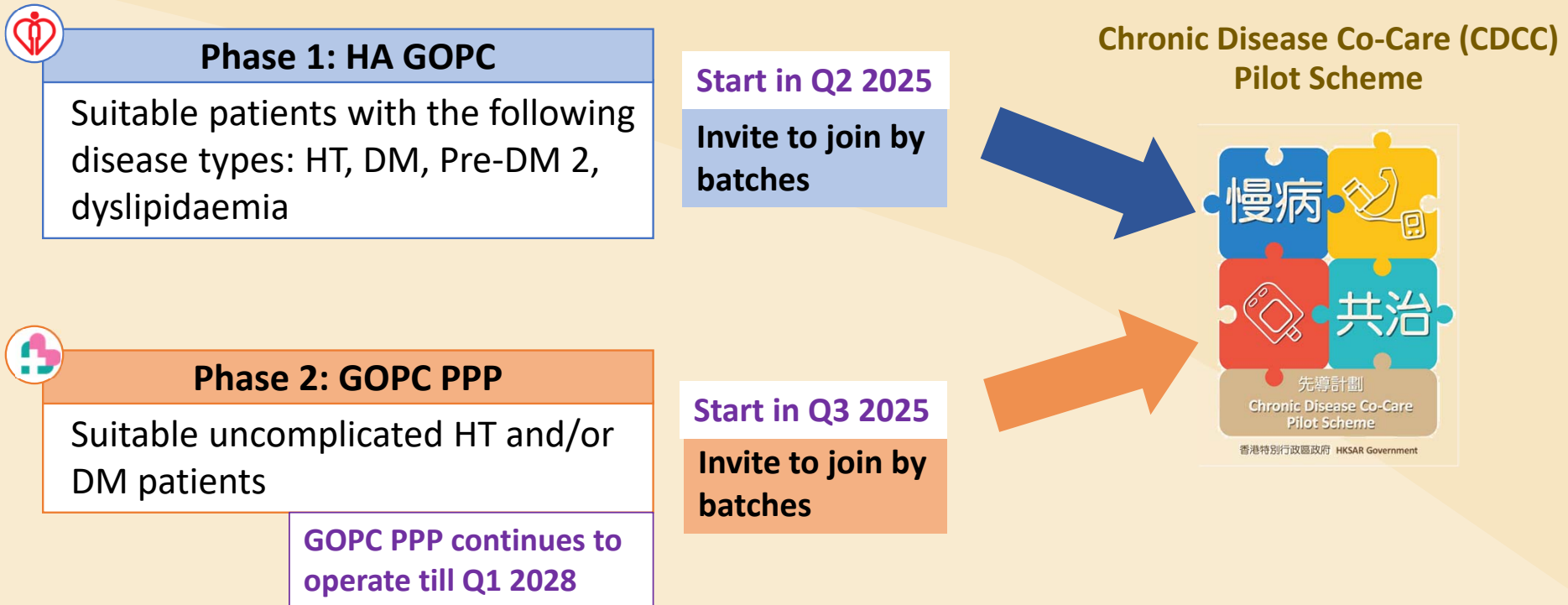
Integration of GOPC PPP into CDCC

Webinar on Latest Outlook Of Chronic Disease Co-care Pilot Scheme

4 March 2025

Dr Christina MAW, Assistant Director, Strategic Purchasing Office

Tentative Arrangement





HA GOPC → CDCC



1. Patient selection

- HA GOPC patients who are **clinically stable** with **uncomplicated HT, DM, Pre-DM 2, Dyslipidaemia**

2. Patient invitation



- By batches, starting Q2 2025

3. Patient enrolment



- DHC to enrol patients into CDCC Treatment Phase
- DHC to arrange family doctor pairing, selection of management plan and first consultation appointment

4. Patient consultation



- Direct admission into treatment phase



HA GOPC PPP → CDCC




1. Patient selection

- Current GOPC PPP patients

2. Patient invitation

- By batches, starting Q3/Q4 2025



3. Patient enrolment

- DHC to enrol patients into CDCC Treatment Phase 

Or

- Direct enrolment at clinic by attending GOPC PPP doctor already joined CDCC 

4. Patient consultation

- Direct admission into treatment phase  → 

Tentative Timeline

HA GOPC → CDCC

Invitations to **HA GOPC** patients

Patient enrolment to CDCC Treatment Phase

Apr
2025

May
2025

Q3/Q4
2025

2028

★
End of GOPC PPP

Patient enrolment in CDCC Treatment Phase

Invitations to **GOPC PPP** patients *By batches*

GOPC PPP → CDCC



An Appeal to All Doctors

For all Doctors

- Support the service provision to more patients from HA GOPCs and HA GOPC PPP
- Support the wider service scope for comprehensive management
- Collaborate with DHC and the multidisciplinary team of professionals to provide holistic care

For Doctors not yet joined CDCC

- Join CDCC to ensure continuity of patient care
- Training and support will be provided for change of operation workflow/platform



Chronic Disease Co-care Pilot Scheme
Screening & Treatment of Diabetes and Hypertension

Thank You